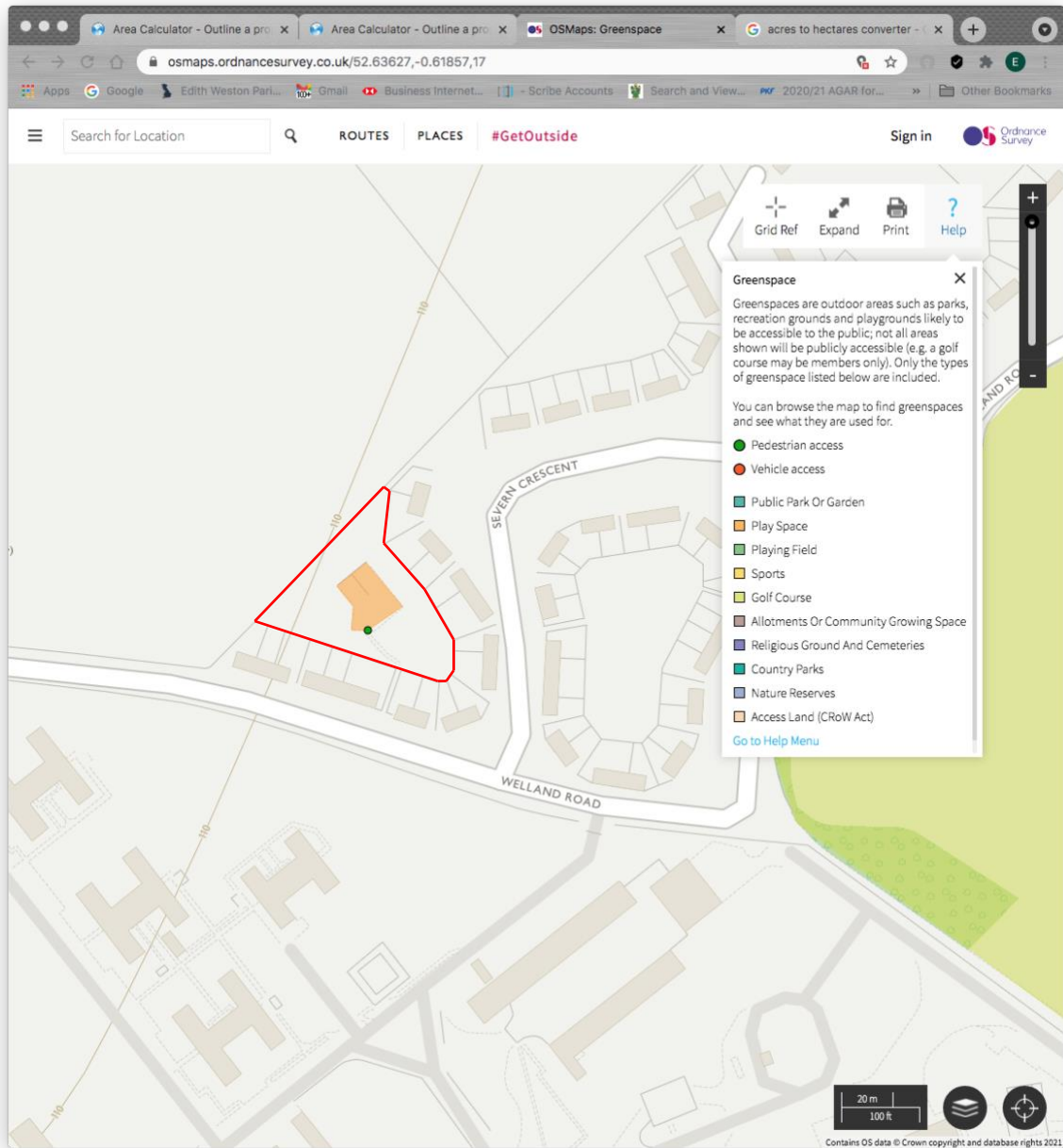


# Local Green Space Assessment Report

## Name of Space

Pennine Play Park  
Pennine Drive,  
Edith Weston

## Plan



## Special Community Value

The area forms a grassed play area with hard play area and equipment (shown in orange) surrounded by military family housing. With only one gate in and out, this is a very secure area with specialised play equipment for younger children including swings and slides all on specialist safety surfacing. This space is regularly used for activities organised by the military welfare services youth club who also organise many outside play sessions for under 5s. This service is offered to all children and families in the village, not just military families.



## Suitability for LGS Designation

<b>Special Community Value</b>	The space is of special community value, as described above.
<b>Area of space (Ha)</b>	Approx. 0.26 Hectares (0.64 acres)
<b>Planning permissions or site allocations</b>	None.
<b>Other Designations</b>	This land is inside the planned limits of development and outside the conservation area.
<b>Not an extensive tract of land</b>	This is not an extensive tract of land as only approximately 0.26 Ha
<b>Close to the community it serves</b>	Provides important play opportunities for the houses surrounding it.

## Conclusion

**We believe this area should be protected as a Local Green Space as it forms valuable play and leisure facilities for the housing estate.**