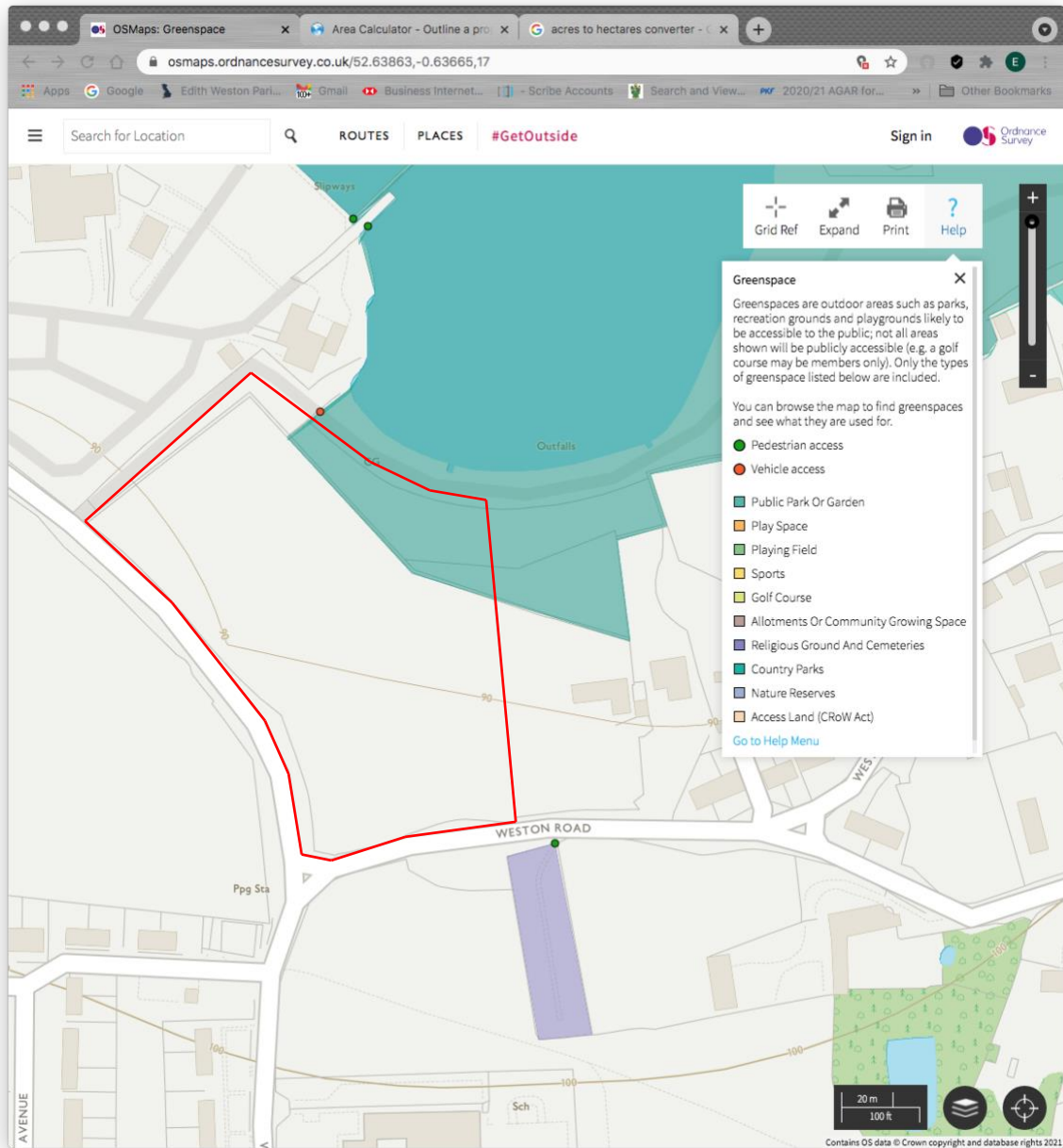


Local Green Space Assessment Report

Name of Space

Weston Road Nature Area
Weston Road
Edith Weston

Plan



Special Community Value

The area forms a mixture of grass land interspersed with mature trees. It is boarded in part by Rutland Water shore line and the public path. It adjoins the sailing club boat yard . Part of the land is part of the Rutland Water country park. The land forms important wildlife habitat and has resident Little Owls regularly nesting in the mature trees and provides an important buffer between the village and Rutland Water Ramsar and SSSI. The land is currently used in part for grassing.



Suitability for LGS Designation

Special Community Value	The space is of special community value, as described above.
Area of space (Ha)	Approx. 1.8 Hectares (4.45 acres)
Planning permissions or site allocations	None.
Other Designations	This land is outside both the planned limits of development the conservation area.
Not an extensive tract of land	This is not an extensive tract of land as only approximately 1.8 Ha
Close to the community it serves	It is boarded in Part by Rutland Water shore line (Country Park) and the sailing club boat yard.

Conclusion

We believe this area should be protected as a Local Green Space as it forms valuable nature habitat including resident breeding Little Owls and provides an important buffer between the village and Rutland Water Ramsar and SSSI. This would also maintain a valuable wildlife corridor from the Water to the fields beyond the village via the glebe land