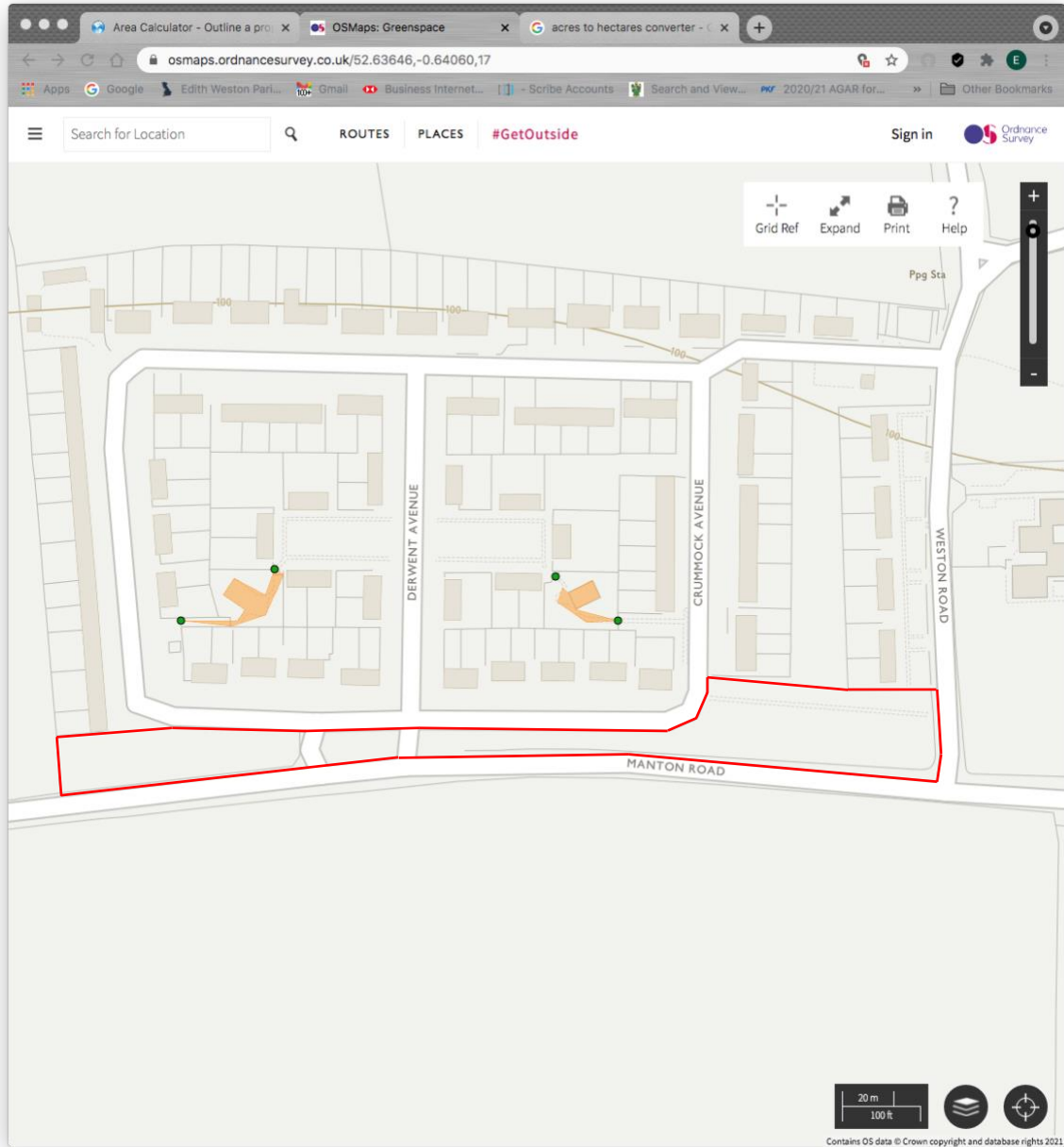


# Local Green Space Assessment Report

## Name of Space

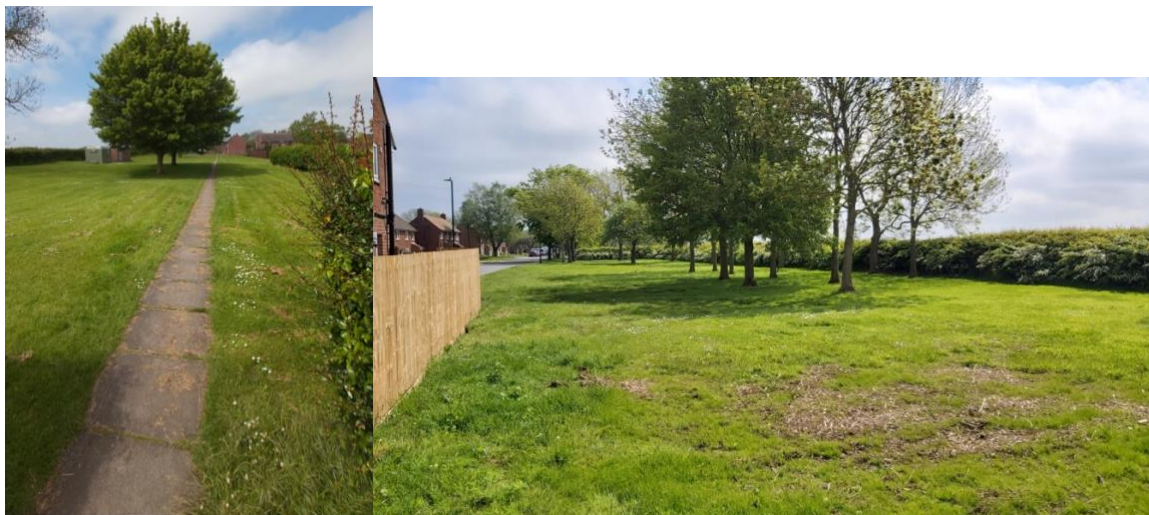
Verge and trees  
Windermere Road/Manton Road,  
Edith Weston

## Plan



## Special Community Value

The area of land forms a vital green screening of verge and mature trees between housing estate and busy public highway. It also forms valuable recreational space and footpath link to the school and village service centre beyond. It is often used for various activities for children such as cycling lessons. The area is crossed by public highway and while the highway is not included the remaining sections should be treated as one space.



Photos taken from Weston Road end and then Windermere Road showing the bus shelter.

### Suitability for LGS Designation

<b>Special Community Value</b>	The space is of special community value, as described above.
<b>Area of space (Ha)</b>	Approx. 0.72 Hectares (1.77 acres)
<b>Planning permissions or site allocations</b>	None.
<b>Other Designations</b>	This land is outside both the planned limits of development and the conservation area.
<b>Not an extensive tract of land</b>	This is not an extensive tract of land as only approximately 0.72 Ha
<b>Close to the community it serves</b>	Close to public Highway and housing estate. Local bus shelter is located on this land. The area is crossed by public highway. The adopted highway is not included the area.

### Conclusion

**We believe this area should be protected as a Local Green Space as it forms a vital area for walking, leisure and recreation. It provides a green buffer with open space and mature trees between the housing estate and the busy main road. It also provides a valuable footpath link to the school and further on to the recreational space and village centre (shop, church, pub etc).**